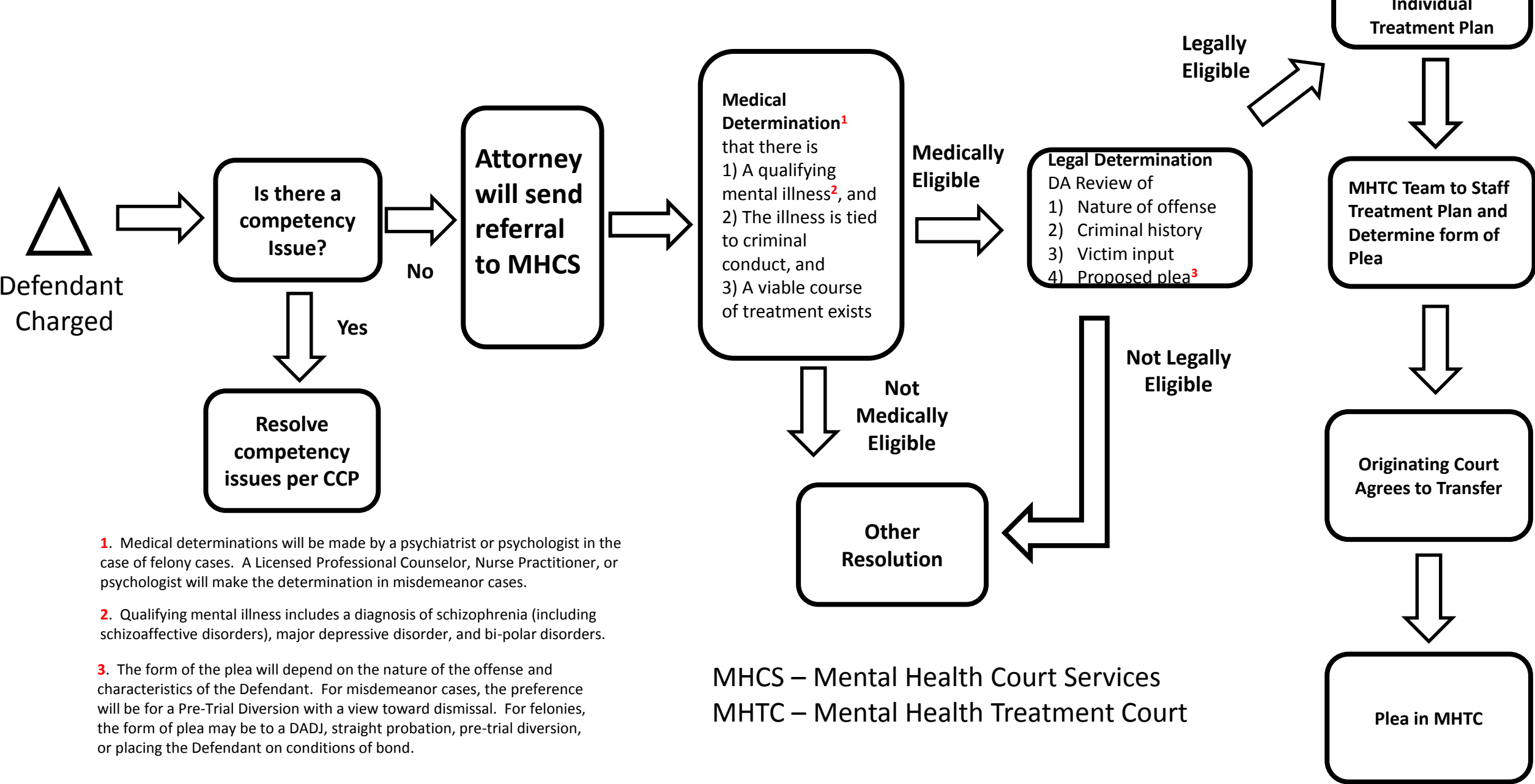


Montgomery County Mental Health Treatment Court Plan



1. Medical determinations will be made by a psychiatrist or psychologist in the case of felony cases. A Licensed Professional Counselor, Nurse Practitioner, or psychologist will make the determination in misdemeanor cases.

2. Qualifying mental illness includes a diagnosis of schizophrenia (including schizoaffective disorders), major depressive disorder, and bi-polar disorders.

3. The form of the plea will depend on the nature of the offense and characteristics of the Defendant. For misdemeanor cases, the preference will be for a Pre-Trial Diversion with a view toward dismissal. For felonies, the form of plea may be to a DADJ, straight probation, pre-trial diversion, or placing the Defendant on conditions of bond.

MHCS – Mental Health Court Services
 MHTC – Mental Health Treatment Court